

LK-402

ARINC-600 to 19" Rack Adapter



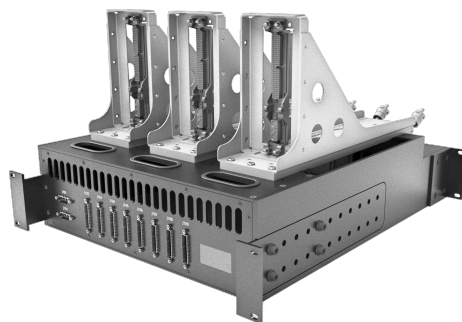
The CCX Technologies LK-402 greatly reduces the cost and complexity of creating test systems for Avionics equipment. It provides all of the building blocks required to mount ARINC-600 based Avionics equipment in a standard 19" rack.

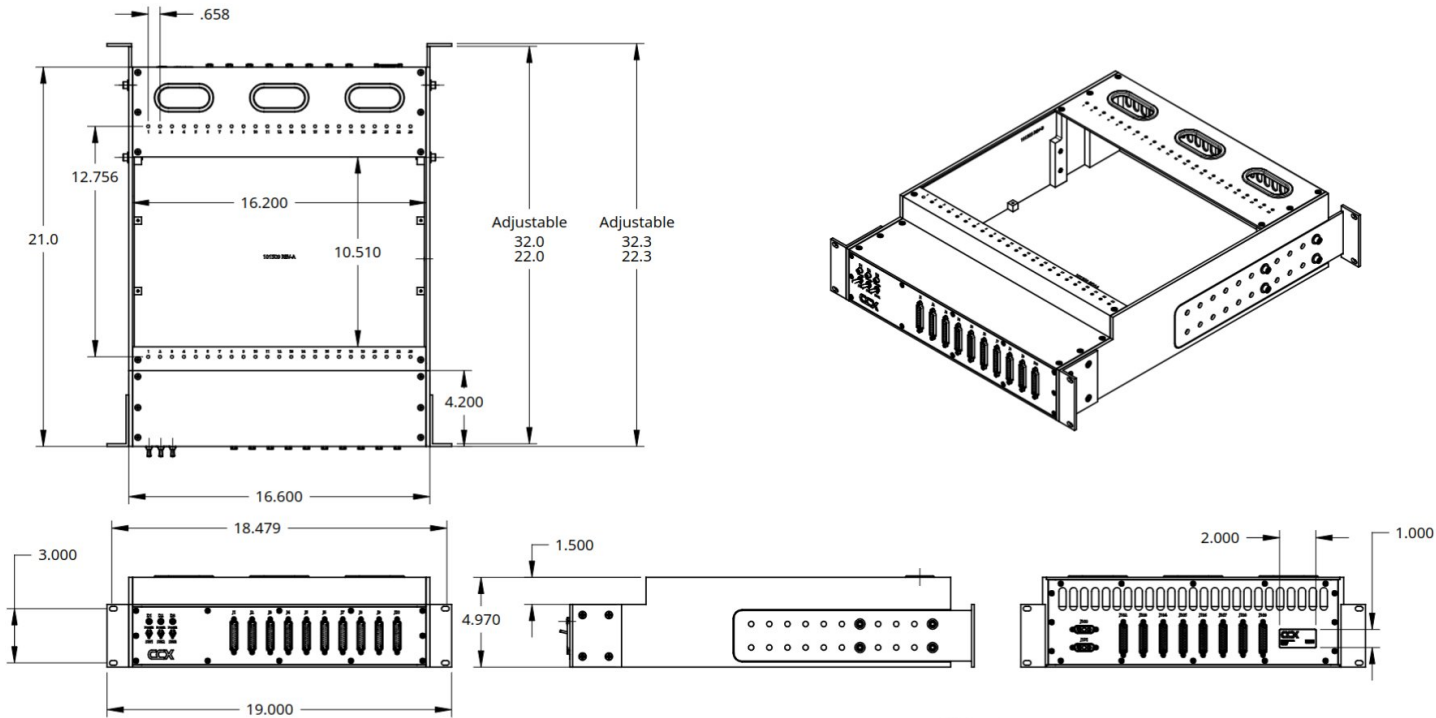
The LK-402 makes it possible to mount any combination of up to 12U worth of ARINC-600 LRUs onto a 10" tall (8U) standard 19" rack. It is compatible with all standard ARINC-600 Trays, with and without fans, including the CCX Technologies ARINC-600 Trays.

The adapter includes front panel and rear panel D-Sub connector mounting locations for breaking out signals from each LRU for the creation of custom wiring harnesses. CCX Technologies can design and build a custom breakout wiring harness, or the end user can design and build their own wiring harness for specific applications.

Features

- 3 Front panel power switches and LEDs
- Mounting locations for 18 D-Sub Signal Connectors and 2 D-Sub Power Connectors
- Facilitates the process of breakout wiring harness designs
- Compatible with all standard ARINC-600 trays



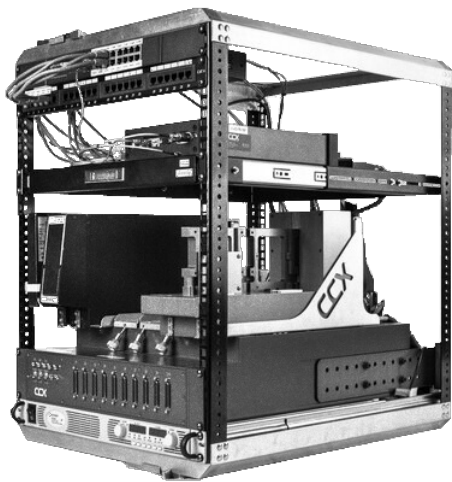


Technical Information

Dimensions	8U 19" Rack Mount, 22"-32" adjustable depth
Weight	0.35lb
Signal Connectors	MIL-DTL-24308G 25-Pin Female Standard Density D-Sub
Power Connectors	MIL-DTL-24308G 3W3 Male D-sub
LEDs	Green, 28VDC
Switches	DPDT, 6A, 125V

Interfaces

QTY	Interfaces	Standards
2	Rear-panel Connector	Power
8	Rear-panel Connector	Signals
3	Front-panel Connector	Power LED
3	Front-panel Switch	Power Switch
10	Front-panel Signals	Signals



Contact us:

[ccxtechnologies.com](https://www.ccxtechnologies.com)

info@ccxtechnologies.com

+1 (613) 695-9434

Powered
by

